

norrbotten.se

Welcome to Region Norrbotten



REGION
NORRBOTTEN



25%
of Sweden's area

This is Norrbotten

Norrbotten is the largest county in Sweden.
It's almost 100,000 square kilometres in size.

A quarter of a million people live in
Norrbotten. This would imply that close to
three percent of Sweden's population are
residents in Norrbotten and live on a quarter
of the country's surface.

Production: Communications Department, Region
Norrbotten 2024.

Printed on Nordic Ecolabelled paper at Luleå Grafiska.
Photo: Simon Eliasson, Carl-Johan Utsi, Petra Isaksson,
Daniel Olausson, Thomas Lövgren and Scandinav.



Norrbotten is a world leader in sustainability

Norrbotten has taken the forefront in the green and global transition. Close to SEK 1,000 billion will be invested in climate-smart solutions by 2040.

LKAB, SSAB and Vattenfall are developing Hybrit in Luleå and Gällivare. H2 Green Steel is investing heavily in Boden. Unique and

world-leading solutions to produce fossil-free steel without carbon. LKAB will start mining and refining rare earth metals which are needed in the global transition for the climate.

Norrbotten is also Europe's space center and will soon launch small satellites for climate monitoring and research.



11,000 years of northerners

The first inhabitants of Norrbotten lived in Tornedalen going back 11,000 years ago. In Aarevaara, 3.5 miles from Pajala, settlements have been found which were then close to the edge of the inland ice.

The Sami people, Europe's only indigenous inhabitants, are an important part of Norrbotten's history and future.

Norrbotten has several national minorities and minority languages, all of which contribute to building a strong multicultural and inclusive county.

Region Norrbotten works for the good of the inhabitants of Norrbotten

Region Norrbotten is governed by all inhabitants of Norrbotten through general political elections. We work for the good of the inhabitants of Norrbotten and conducts health and medical care, dental care and regional development.

The turnover was approximately SEK 10 billion and we are the county's second largest employer. We have about 7,000 employees, most of them work in health care.



All inhabitants of Norrbotten must have safe and secure care

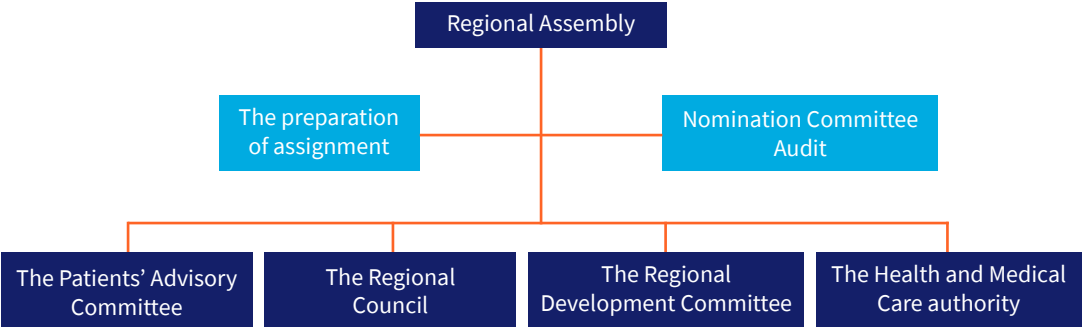
Annually, we receive roughly **1.3 million patient visits**, perform about **21,000 operations**, handle of more than **114,000 days of care** and help nearly **2,000 new inhabitants** to the world. Our committed and competent staff work around the clock, year round, to provide safe and secure care for the people of Norrbotten.

The vast majority of people in Norrbotten is of the opinion that they have access to the care they need and 9 out of 10 residents are satisfied with their hospital care. Cancer care in Norrbotten is among the best in Sweden. Anyone who becomes acutely ill in Norrbotten will see a physician the fastest in the whole country. Emergency medical services and maternal health and obstetric care receive **very high marks from the people in Norrbotten**.

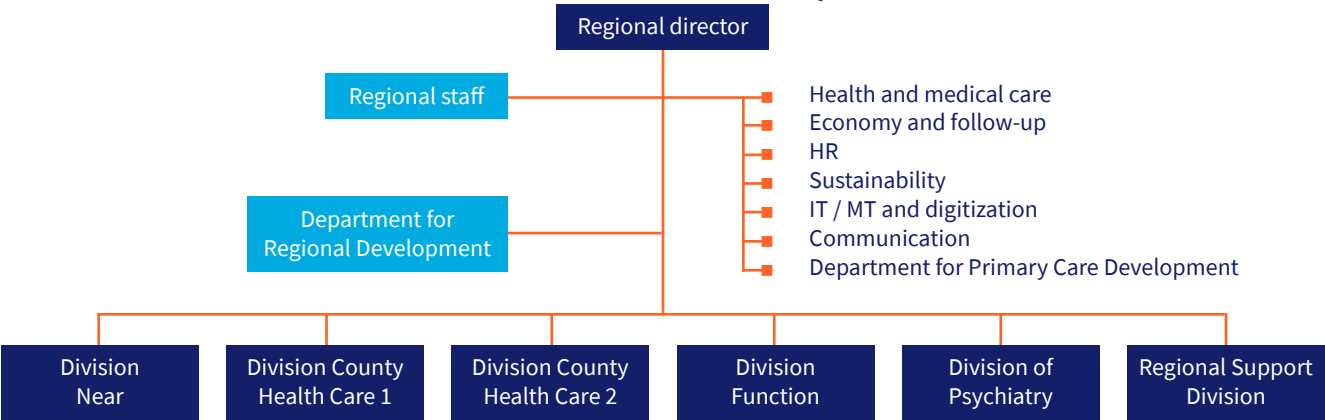
(Sources: SKR/the healthcare barometer, the cancer registry, the National Board of Health and Welfare, Fairlink, the pregnancy questionnaire)



Political organization



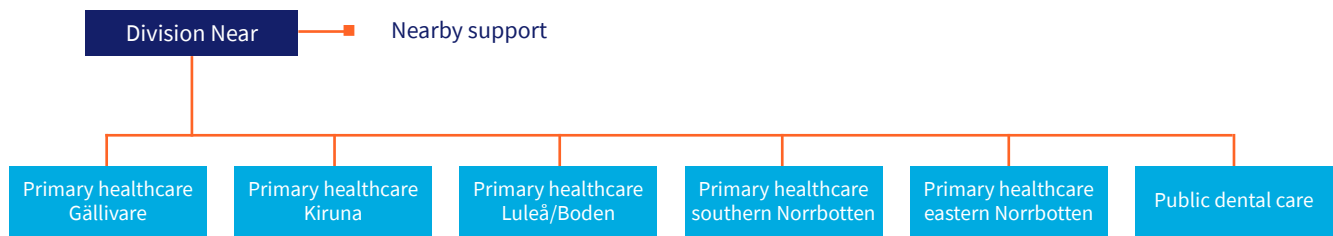
The service organization





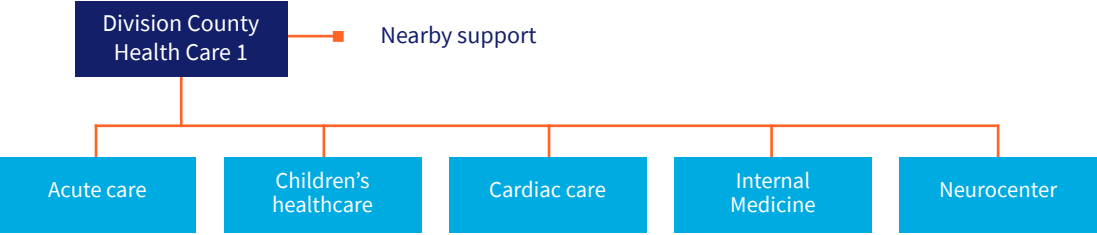
Division Near

Division Near includes the county's primary care and public dental care as well as other activities connected to primary care, including vaccine receptions, tracing of contagion and telephone advice. The division has approximately 2,000 employees, of which approximately 500 work in public dentistry.



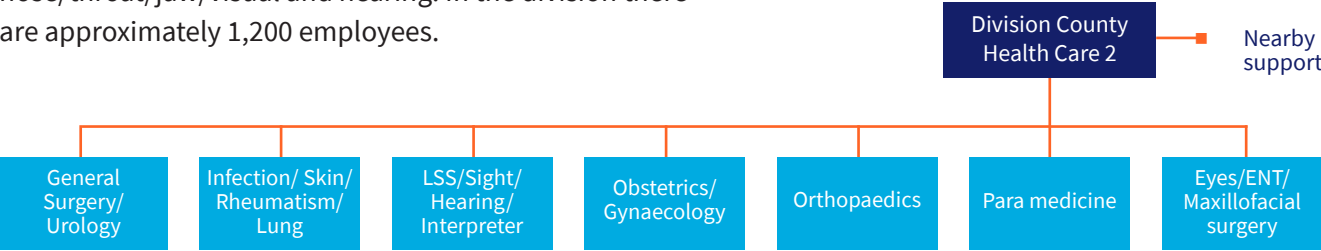
Division County Health Care 1

Division County healthcare 1 includes the following activities of the county’s specialist care: Acute care, paediatric care, internal medicine, neurocenter and cardiac care. In addition, there is a staff for County healthcare 1. Approximately 2,000 people work within this division.



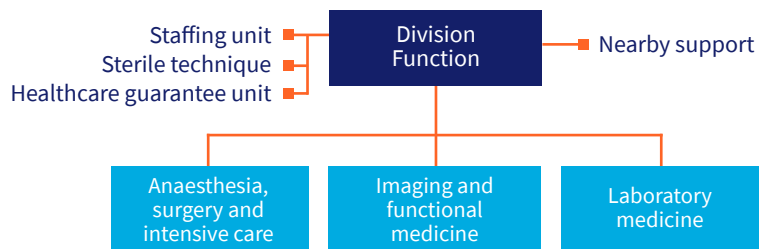
Division County healthcare 2 includes parts of the county’s specialist care and contains the following activities: General surgery/urology, obstetrics/ gynaecology, nursing, oncology, orthopaedics, infection/ skin/rheumatism/lung, para medicine, eyes and ears/ nose/throat/jaw/visual and hearing. In the division there are approximately 1,200 employees.

Division County Health Care 2



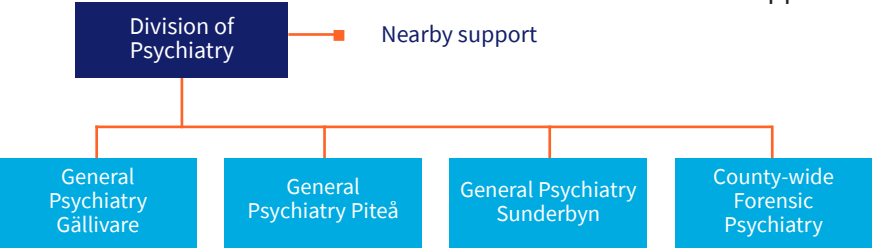
Division Function

Division Function covers anaesthesia, surgery and intensive care, imaging and functional medicine as well as laboratory medicine. The division has approximately 600 staff members.



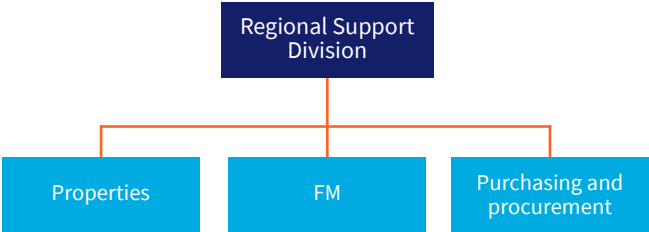
Division of Psychiatry

The Division of Psychiatry’s task is to provide specialized care and treatment in an equal way to all people of Norrbotten. The division encompasses the entire county’s competence in the field of psychiatry and has approximately 600 employees.



Division Regional Support is responsible for the support and service functions Facility Management, Purchasing and procurement and property management. The division’s task is to provide cost-effective coordinated support and development to divisions, departments and citizens. The division has approximately 600 staff members.

Regional Support Division





We are here

There are 29 health centers in Norrbotten. 24 health centers are run by Region Norrbotten and five are run by private healthcare providers.

In addition, we have many branches and service points around the county. The aim is to enhance care and create improved accessibility in sparsely populated areas.

A branch is located 45 km or more from the nearest health center. In the locality, a minimum of 150 people in the population must be 65 years of age or older. At a branch one can receive medical assessment and treatment. It is staffed by nurses/physicians and other professional categories. The branch is open at least one day a week.

A service point is located 25-44 km from the nearest health center, in a fixed location or as a mobile solution. It is staffed by a nurse/assistant nurse and is open at least every other week. At the service point, one can leave samples and get help with simpler care.



Our hospitals

There are five hospitals within Region Norrbotten, three on the coast and two in Malmfälten.





Dental care in Norrbotten

The public dental care works for good oral health in Norrbotten and has approximately 500 employees and 19 clinics around the county.

There is also specialist dental care in Luleå, Gällivare and Piteå. Patients with referrals from dentists, physicians and other healthcare providers are received there.





Foto: Thomas Lövgren

Region Norrbotten takes responsibility for the county's development

The regional development department is working with sustainable regional development on behalf of the Swedish government and elected politicians of Region Norrbotten. We are working with collaboration, lobbying and financing to develop business, community planning and culture.

The regional development strategy sets out our direction and shows how we want Norrbotten to be in the long term - as well as the roadmap which will take us there. The strategy depicts a picture of the county's strengths and challenges and brings forward areas of priority to rally around.

Our vision, Norrbotten will become Sweden's most welcoming and innovative county, points out the direction for the future. It guides us in our work of creating an attractive and vibrant region. In order to succeed, we have a collaboration with a number of important stakeholders: municipalities, business and culture, but also authorities, such as universities and important financiers, to name a few.

The department has approximately 150 employees of which about 100 staff members work for the cultural institutions Norrbottensmusiken, Regionbiblioteket and Norrbotten's museum.



Culture is important for an attractive county

We work to ensure that culture is accessible, viable and close. We accomplish this by creating venues and supporting businesses and associations which can offer both culture and community. Norrbottensteatern, Norrbottensmusiken, Norrbotten's museum and the Regionbiblioteket allow Norrbotten residents to consume high-class culture wherever they live.

**Region Norrbotten is the
principal for the cultural
institutions and the cultural
promotion activities:**

Music in Norrbotten
Norrbotten museum
Norrbotten Regional Library
Resource Center for Art
Resource Center for Literature
Region Norrbotten Art collection
Dance Consultant
Handicraft Consultants
Art Consultant



Sustainability and the region

Norrbotten is undergoing a green transition where organizations, authorities and businesses are switching to climate-smart and sustainable solutions.

Region Norrbotten is an important actor and contributes partly by taking responsibility and working socially, environmentally and economically in line with politically prioritized Agenda 2030 goals. Partly by contributing with project financing, training and motivational exercises to make Norrbotten sustainable and attractive for current residents, new residents, visitors and investors.

utvecklanorrbotten.se
norrbotten.se/hallbarhet

Equality and the region

Equality is a priority issue for Region Norrbotten. The region works in line with the overall policy goal of gender equality:

Women and men must have the same power to shape society and their own lives.



norrbotten.se

